

USER MANUAL

**TD Remote Control Server V1
(RCS)**



Table of Contents

Introduction	3
About this Document	3
Prerequisites for Using the Document	3
Using the Web Interface	4
Accessing the Remote Control Server	4
Finding a Device	5
Checking Device Information	5
Editing Device Attribution	5
Adding a Device	5
Deleting a Device	5
Rebooting	6
Configuring a Device	6
Device Configuration	7
Updating the Firmware	8
Remote Monitoring	9
Account Management	9

Introduction

The TD series Intelligent Counting Sensors possess an ideal balance of technical proficiency and cost effectiveness in the people counting market. They can be widely used by brick and mortar real estates, shopping centres and retailers for traffic data capture, analysis, storage and delivery.

The TD sensor technical documentation suite includes:

- ✓ *Quick Start Guide*
- ✓ *Quick Configuration Guide*
- ✓ ***Remote Control Server User Guide (this document)***

About this Document

TD Remote Control Server User Guide details the main functions and configuration instructions for IT departments and implementation engineers to remotely manage and maintain TD series smart counting sensors through the web portal of Remote Control Server. Contact our technical representatives for assistance if you need more information which is not described in the document.

Prerequisites for Using the Document

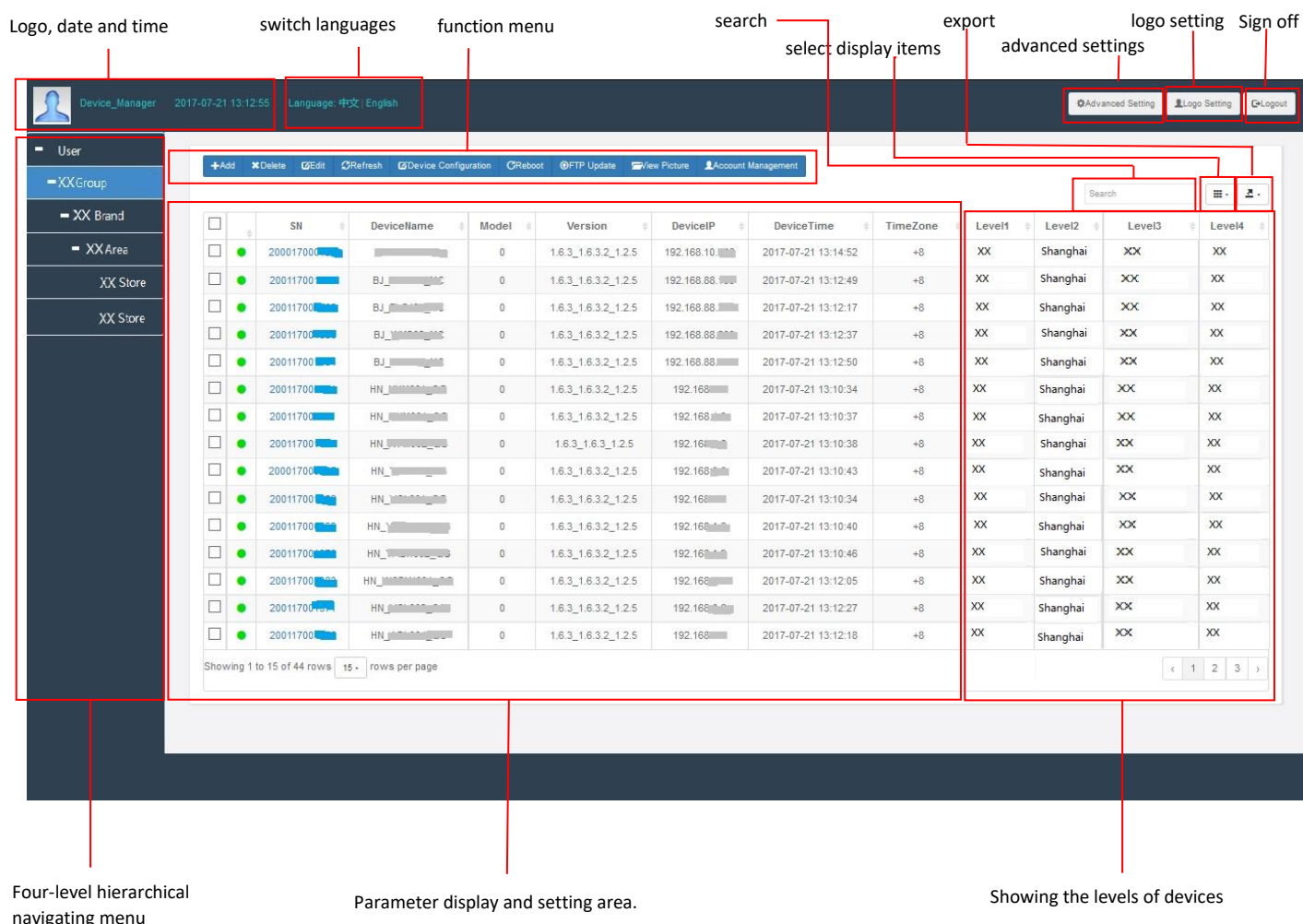
Before attempting to use the Remote Control Server for remotely management, make sure your devices have been installed properly by following the steps as described in the ***Quick Start Guide*** and you have the ***Quick Configuration Guide*** at hand.

Using the Web Interface

Remote Control Server is available as a browser-based web portal, which allows you to manage TD series sensors remotely. To fully access the web interface, your computer shall be installed with Internet Explorer 10.0 or newer, or latest version Google Chrome or Mozilla Firefox.

Accessing the Remote Control Server

To access the web portal, type the URL of the device manager in the address bar of your browser. If it's the first time that you access the portal, you need to input the user name and password as assigned by the administrator. The user interface as below demonstrated will be slightly different for the admin users and ordinary users. Refer to the section: [Account Management](#) for details. Most commonly, there's a hierarchical menu on the left side supporting up to four-level navigating, which allows you to easily locate a device. For instance, you may classify a device as belonging to a certain store in a certain area under the brand of 'XX' of a company, or define any other appropriate hierarchy for the devices.



The screenshot shows the Remote Control Server web interface. Annotations point to various features:

- Logo, date and time:** Points to the top left header area.
- switch languages:** Points to the language selection dropdown (Language: 中文 | English).
- function menu:** Points to the top navigation bar containing buttons like Add, Delete, Edit, Refresh, Device Configuration, Reboot, FTP Update, View Picture, and Account Management.
- search:** Points to the search input field in the top right.
- select display items:** Points to the search icon and the table header area.
- export:** Points to the export icon in the top right.
- logo setting:** Points to the Advanced Setting button.
- Sign off:** Points to the Logout button.
- Four-level hierarchical navigating menu:** Points to the left sidebar menu showing a hierarchy: User > XX Group > XX Brand > XX Area > XX Store > XX Store.
- Parameter display and setting area:** Points to the main table displaying device parameters.
- Showing the levels of devices:** Points to the table columns Level1, Level2, Level3, and Level4.

SN	DeviceName	Model	Version	DeviceIP	DeviceTime	TimeZone	Level1	Level2	Level3	Level4
200017000	BJ_XXXXXX	0	1.6.3_1.6.3.2_1.2.5	192.168.10.XXX	2017-07-21 13:14:52	+8	XX	Shanghai	XX	XX
200011700	BJ_XXXXXX	0	1.6.3_1.6.3.2_1.2.5	192.168.88.XXX	2017-07-21 13:12:49	+8	XX	Shanghai	XX	XX
200011700	BJ_XXXXXX	0	1.6.3_1.6.3.2_1.2.5	192.168.88.XXX	2017-07-21 13:12:17	+8	XX	Shanghai	XX	XX
200011700	BJ_XXXXXX	0	1.6.3_1.6.3.2_1.2.5	192.168.88.XXX	2017-07-21 13:12:37	+8	XX	Shanghai	XX	XX
200011700	BJ_XXXXXX	0	1.6.3_1.6.3.2_1.2.5	192.168.88.XXX	2017-07-21 13:12:50	+8	XX	Shanghai	XX	XX
200011700	HN_XXXXXX	0	1.6.3_1.6.3.2_1.2.5	192.168.XXX	2017-07-21 13:10:34	+8	XX	Shanghai	XX	XX
200011700	HN_XXXXXX	0	1.6.3_1.6.3.2_1.2.5	192.168.XXX	2017-07-21 13:10:37	+8	XX	Shanghai	XX	XX
200011700	HN_XXXXXX	0	1.6.3_1.6.3.2_1.2.5	192.168.XXX	2017-07-21 13:10:38	+8	XX	Shanghai	XX	XX
200011700	HN_XXXXXX	0	1.6.3_1.6.3.2_1.2.5	192.168.XXX	2017-07-21 13:10:43	+8	XX	Shanghai	XX	XX
200011700	HN_XXXXXX	0	1.6.3_1.6.3.2_1.2.5	192.168.XXX	2017-07-21 13:10:34	+8	XX	Shanghai	XX	XX
200011700	HN_XXXXXX	0	1.6.3_1.6.3.2_1.2.5	192.168.XXX	2017-07-21 13:10:40	+8	XX	Shanghai	XX	XX
200011700	HN_XXXXXX	0	1.6.3_1.6.3.2_1.2.5	192.168.XXX	2017-07-21 13:10:46	+8	XX	Shanghai	XX	XX
200011700	HN_XXXXXX	0	1.6.3_1.6.3.2_1.2.5	192.168.XXX	2017-07-21 13:12:05	+8	XX	Shanghai	XX	XX
200011700	HN_XXXXXX	0	1.6.3_1.6.3.2_1.2.5	192.168.XXX	2017-07-21 13:12:27	+8	XX	Shanghai	XX	XX
200011700	HN_XXXXXX	0	1.6.3_1.6.3.2_1.2.5	192.168.XXX	2017-07-21 13:12:18	+8	XX	Shanghai	XX	XX

Finding a Device

You can easily find a device by any of the following means:

- 1) navigating the hierarchical menu on the left side if the device has been fully classified;
- 2) finding the device under **'unallocated'** if it has not been assigned with levels;
- 3) typing key words such as the brand name or store name in the **'Search'** bar.

Checking Device Information

By default, the following information including SN, device name, model, version, device IP, device time, time zone, and levels will be displayed. You can actually specify what information you wish to view by clicking **'selecting display items'** and making your choices. Besides the information as below listed, other information such as transmission port, MAC address, and server IP can also be ticked to display.

SN	DeviceName	Model	Version	DeviceIP	DeviceTime	TimeZone	Level1	Level2	Level3	Level4
----	------------	-------	---------	----------	------------	----------	--------	--------	--------	--------

Editing Device Attribution

Click **'Edit'** from the function menu, the four-level attribution information of devices will become editable. Input or change the levels of your devices and hence classify the devices in the right groups.

Adding a Device

Click **'Add'** of the function menu, and input device information in the following pop-up window. Click **'Confirm'** to add the new device.

Add

Device information

SN:

IP:

MAC:

Port:

Time:

Attribution information

Level1:

Level2:

Level3:

Level4:

Close

Confirm

Device Information: including SN, IP, MAC, Port and Device Time

Attribution Information : the four-level information which is used to attribute the device to its user or owner, for example, to attribute a device to a store located in Shanghai under the brand name of a company.

Deleting a Device

Select the devices that you want to remove from the system and then click **'Delete'** from the function menu. After confirmation, the devices will be removed from your system. This function supports bulk operation. You may select more than one device.

Rebooting

Select the devices that you want to reboot and then click **'Reboot'** from the function menu. After confirmation, the devices will be rebooted. This function supports bulk operation. You may select more than one device.

Configuring a Device

Click the SN of any devices, you will be directed to the firmware portal of the device in which you can set the parameters of network, camera, server, counting metrics for the single device. Refer to the **Quick Configuration Guide** for details.

The screenshot displays the device configuration interface. At the top, the date and time are 2017/07/21 15:09, and the version is 1.6.3/1.6.3.2/1.2.5. There are buttons for English, 中文, and Log Out. The left sidebar contains a menu with options: Device Config, Network Config, Service Config, Camera Config, Passenger Flow Statistics, Passenger Stay Statistics, Heat Map, and Advanced Options. The main area is divided into two sections. The left section, titled 'Real Time Image', shows a live camera feed of an interior space. The right section contains configuration fields for Host Name, Device SN, Store ID, Store Name, Device ID, Device Name, Device Type, Password Option, Username, and Password. The 'Save' button is blue, and the 'Reset to Default' button is red.

Field	Value
Host Name	Host-200017000128
Device SN	200017000128
Store ID	Changlu Road
Store Name	Office
Device ID	Test
Device Name	Test
Device Type	0
Password Option	<input type="checkbox"/>
Username	test
Password	****

[Save](#) [Reset to Default](#)

Device Configuration

Device configuration sets service related parameters for devices. This function supports bulk operation and setting of primary/secondary report server, time server and device manager server. Firstly, select the devices, then click '**Device Configuration**'. Tick and input the server information including IP address, port, directory etc. Make sure to tick '**Activate**' if you need to use the Secondary Report Server. Finally, click '**Confirm**' to make the settings effective.

Device Configuration

☐ Primary Report Server Address

☐ Primary Report Server Port

☐ Primary Report Server Directory

☐ Secondary Report Server Address

Activate ☐

☐ Secondary Report Server Port

☐ Secondary Report Server Directory

☐ Time Server

Primary Report Server

Time Correction ☐

☐ Time Server Address

☐ Time Server Port

☐ Device Manager Server Address

☐ Device Manager Server Port

Close Confirm

Primary Report Server: the main server used to keep counting data

Secondary Report Server: the backup server for keeping counting data

Time Server: the server from which the time can be used to synchronize the device time. You may specify the time server by selecting from the primary report server, secondary report server or NTP server

Device Manger Server: the server used to host the software and relevant data for the Remote Control Server

Updating the Firmware

Select the devices that you want to upgrade and then click **'FTP Update'** from the function menu. Input the ftp information in the following pop-up window to complete updating firmware for all the selected devices.

FTP Update

FTP Address

FTP Port

FTP Username :

FTP Password :

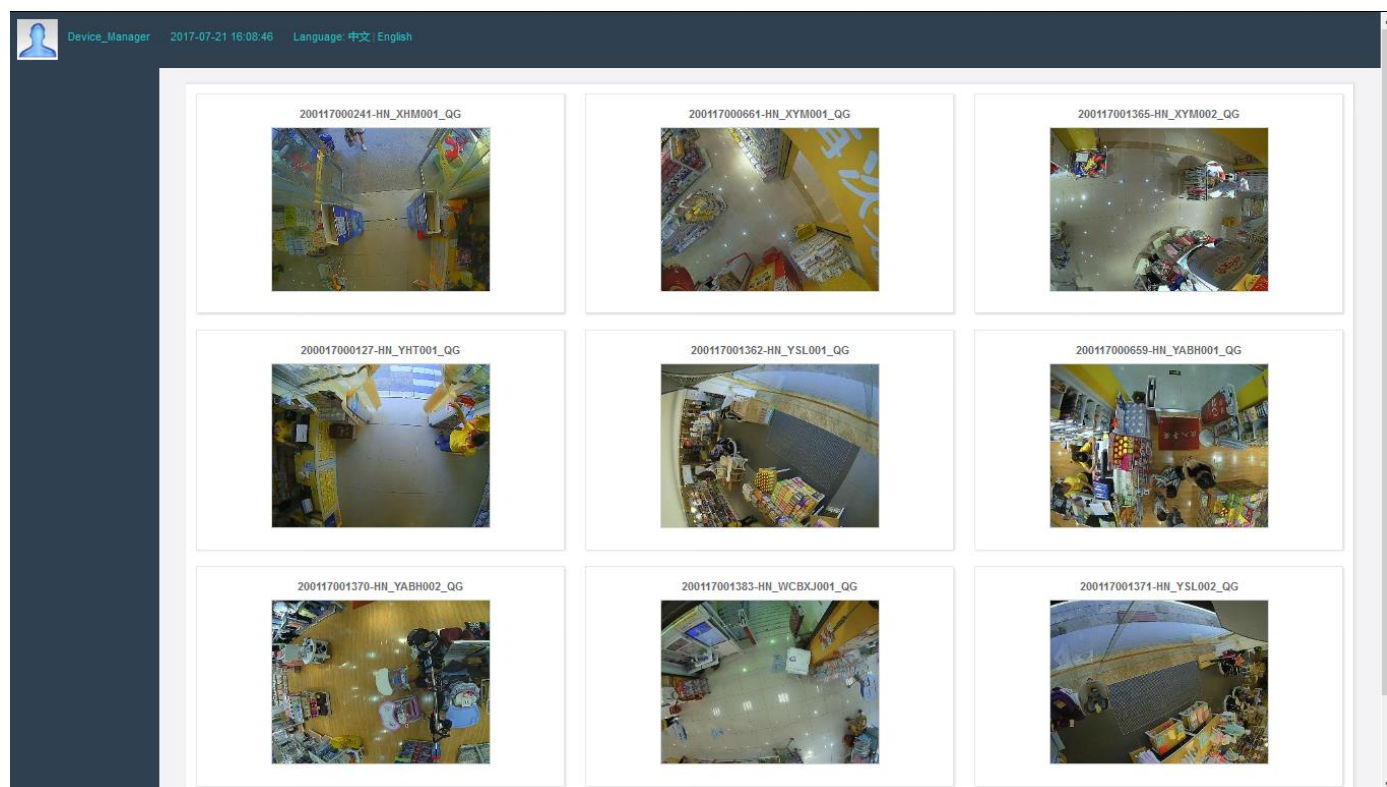
Filename:

Close

Confirm

Remote Monitoring

Select the devices and click '**View Pictures**' from the function menu, you will be able to remotely view the area such as the entrance of a store where the devices are installed. This function supports up to 9 devices viewing at one time. The monitoring pictures are updated every 10 seconds.



Account Management

User accounts can be managed by clicking '**Account Management**' from the function menu. You can create different user groups and set the authority for each user group and manage users in each user group in Account Management.

- 1) **User Group Management:** two kinds of user group are supported, **Admin** or **Ordinary**. Users in the Admin user groups have full access right and can manage devices of all levels. The authority of users in the Ordinary user groups will be set by the Admin users. For instances, an Ordinary user group may be authorized to manage devices under a certain level only, without the right to manage devices of the upper levels.
- 2) **User Management:** add a new user to, or delete an existing user from a user group; assign a user to a specified user group; enable or disable a user etc.